

The Wellington Engagement Index

The Wellington Engagement Index (WEI) is a simple, innovative tool for measuring student engagement. Students give regular, direct feedback on engagement by placing classes on the Engagement Grid. Students who are both Challenged and Love the classroom experience are Engaged students; engaged students are students who are doing their best learning.

- Implement the WEI quickly with a straight-forward CSV upload
- Or, use Clever's free automated SecureSync platform

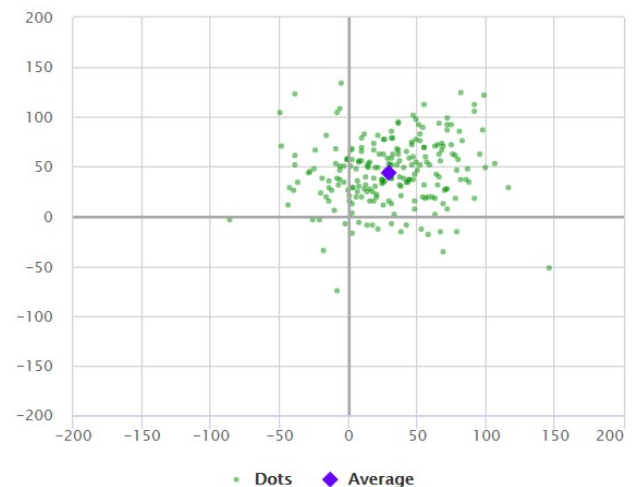


- Save troubleshooting time: set-up takes mere hours, and support is one phone call away
- Save instructional time: students can understand and complete the WEI in only 2 minutes
- Save analysis time: insights are instantly available and clearly presented

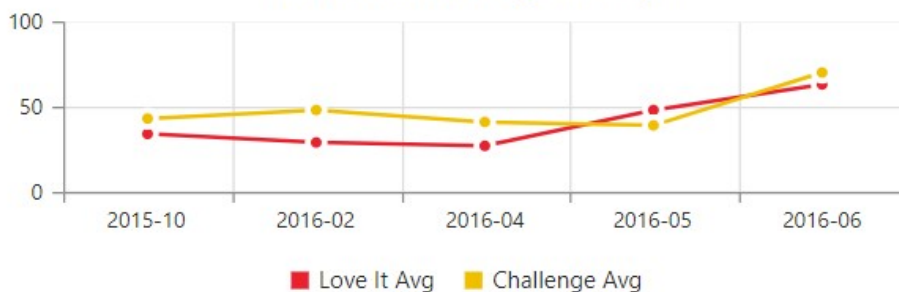
Use powerful data analytics

- Online WEI Data Visualizer quickly delivers insights into your data with numerous reporting tools
- Data immediately available after student input
- Easily identify outlier students in an Rtl framework
- Analyze data with filter settings for grade level, discipline, gender, and more
- Empower educators with teacher-level logins

Aggregate By: Student Class Teacher None



Love It & Challenge Averages



- Validate improvements with data trends over time
- Illuminate trends in engagement over the school year



- Pay one affordable annual subscription fee
- Unlimited applications to students per year
- 24/7 access to data analytics tools
- Receive access to free consultations

Want to learn more? Contact:

Peter Herzberg
646-337-3309
p Herzberg2@gmail.com
www.educationbeyondthecore.com